

ANI Update Procedure

Recently Audinate integrated “Dante Updater” in to “Dante Controller”. This makes it more easy to check for and install available updates. This one time procedure is needed to make the ANI compatible with the new “Dante Updater”. Later updates will be handled via the “Dante Updater” built in “Dante Controller”.

The scope of this procedure is to update the AUDAC ANI from Dante firmware 3.x.x to 4.x.x.

1 Requirements

1.1 Hardware

- PC with following software tools:
 - Dante Controller
 - <https://www.audinate.com/products/software/dante-controller>
 - Dante Firmware Update Manager
 - <https://www.audinate.com/latest-firmware-update-manager>
- Audac ANI (device to be updated)
- Audac SMA, SMQ, PMQ or MFA as a host device for the ANI
- **100Mbit or 100/1000Mbit** Ethernet switch/hub to connect the PC and ANI
 - Not all Gigabit switches are compatible with the ANI

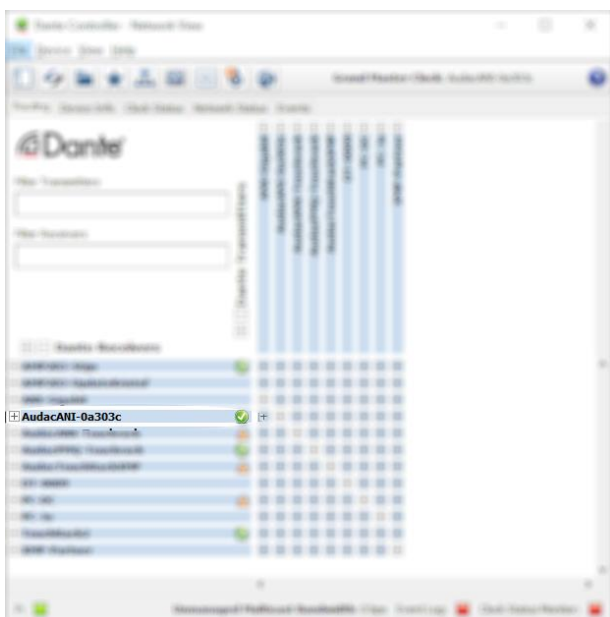
1.2 Firmware

- ANI22: <https://audac.eu/Products/d/ani22---dante-audio-network-interface-2-in---2-out#downloads>
- ANI44: <https://audac.eu/Products/d/ani44---dante-audio-network-interface-4in---4-out#downloads>

2 Preperations

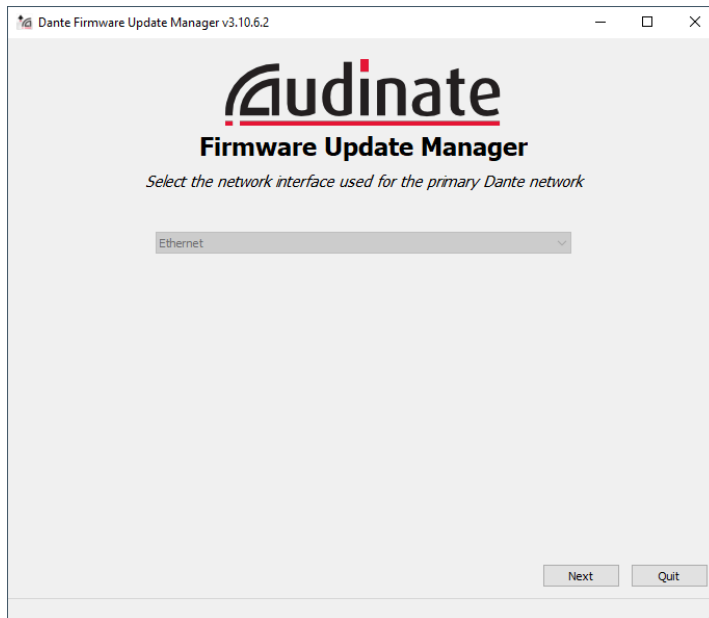
2.1 Identify Device

- Open Dante Controller, identify the ANI to be updated

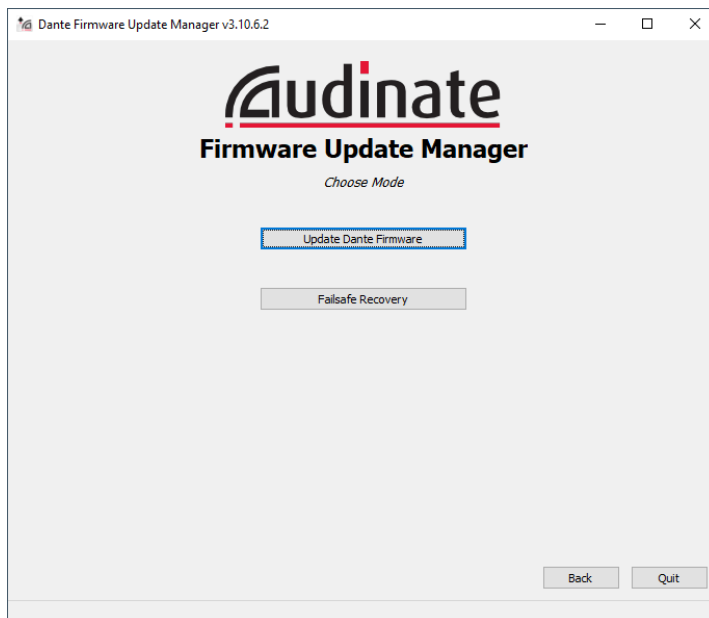


3 Update

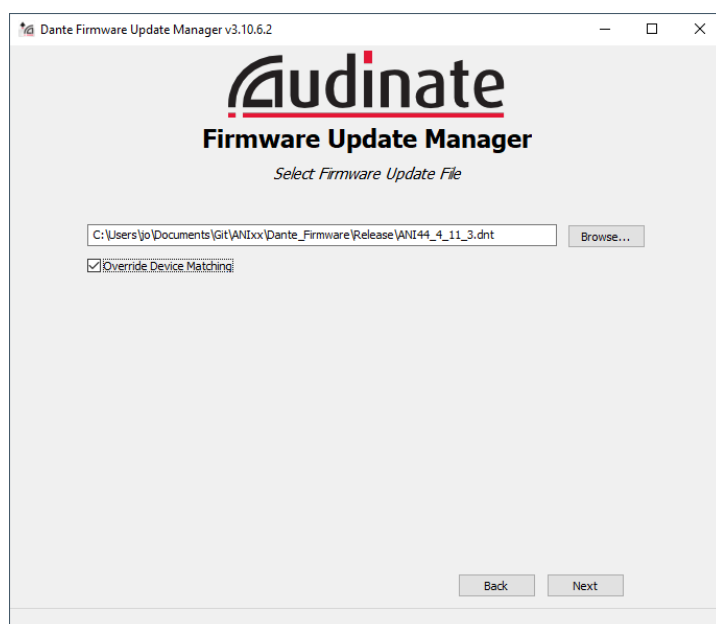
- Start Dante Firmware Update Manager



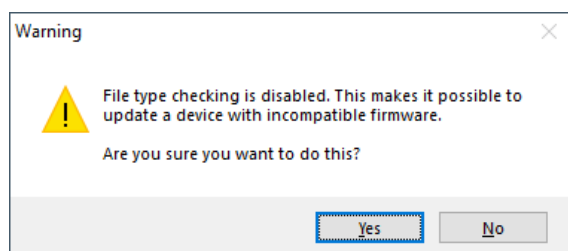
- Select network interface and press “Next”



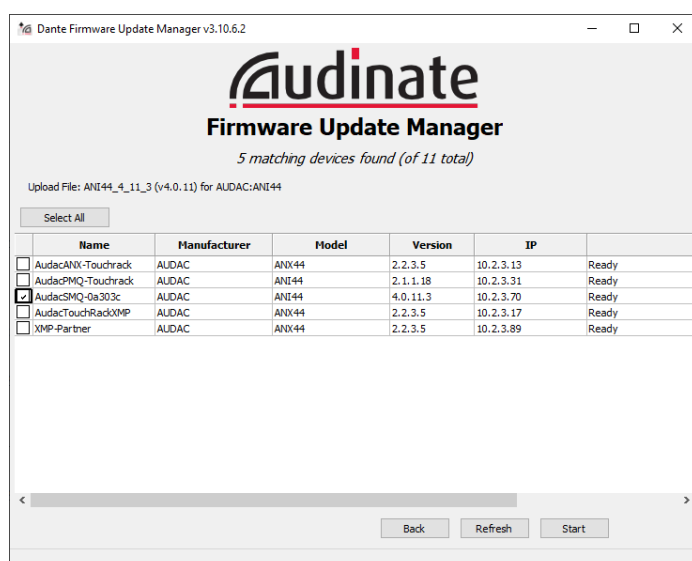
- Press “Update Dante Firmware”



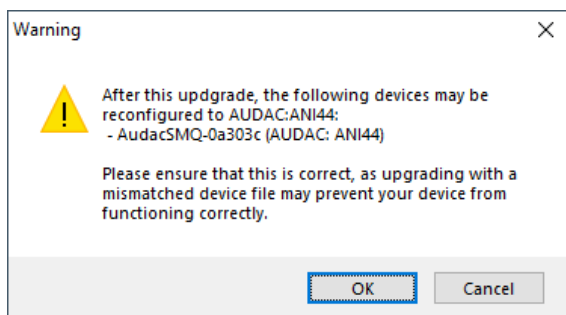
- Select new firmware file
- Select “Override Device Matching”. This is needed because new ID’s are used in firmware 4.x.x
- Press “Next”



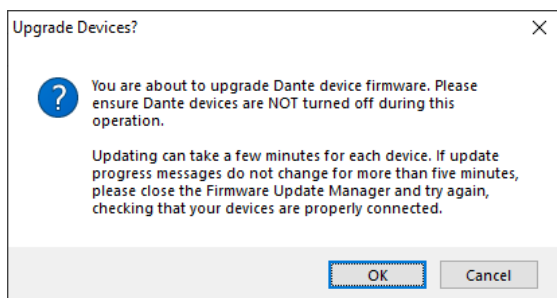
- Press “Yes”



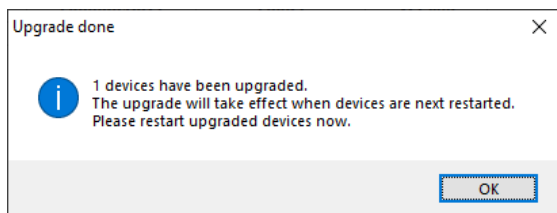
- Select ANI to update
- Press “Start”



- Press “OK”. Warning because new ID’s are used in firmware 4.x.x



- Press “OK”



- Update successful
- Press “OK”

